

B & B Pens Rattlesnake Blank Instructions

Always use eye protection and a dust mask while turning!

February 2008

These blanks are more difficult to turn when compared to wood or regular acrylic. Failures to follow these directions will more than likely result in the failure of the blank(s). The acrylic material can easily be lifted off the surface of the snakeskin because of the chemicals used to tan the hides. These chemicals do not allow a 'tacky' bond.

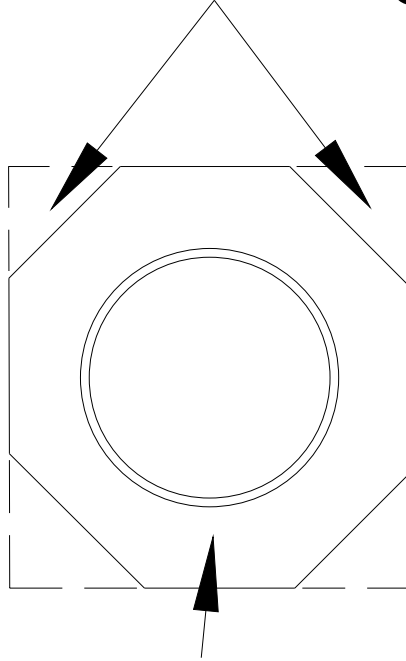
We recommend that only experienced turners attempt these blanks. If you 'blow up' a blank we do not automatically replace it. We will ask that you to return the damaged blank for examination and if the manufacturer determines that there was a flaw in the blank they will replace it. If the manufacturer deems that it is the turner's fault then you will not receive a replacement.

1. Carefully trim the lengthwise edges of the blanks using a belt or disc sander (sand the four corners off the entire length of the blanks. Insert a wooden dowel that fits snugly inside the pen tube and sand the blanks close to their required diameter while keeping the blanks as round as possible. Sand each blank individually. See diagram on back.
2. Using a disc sander (recommended) and being very careful, trim the ends of the blanks (for length) per the pen kit instructions. Chamfer the mouth of the brass tube in order to remove any burrs inside the mouth of the brass tube.
3. Mount the blanks with the correct bushings onto your pen mandrel and begin sanding the blanks. Some people will use a fine-tooth, flat bastard file to bring the acrylic down. **DO NOT SAND THE ACRYLIC MATERIAL ALL THE WAY TO THE BUSHINGS!** Leave a small amount of acrylic above the bushings for final sanding (about .05" to .07"). The snake skins add about .07" to the diameter of the tubes. If you sand the acrylic down to the bushings you can easily ruin the blank by exposing the snake skin.

Some kits have the necessary "extra diameter" to accommodate the extra diameter need for the snake skin blanks but, until you are absolutely sure that sanding down to the bushings will not expose the skin, we suggest that you err on the side of caution. If the finished acrylic material is larger than the nib, center band, finial, etc. round off the sharp edge of the acrylic with sandpaper so as to blend in with the metal parts.

4. Finish these blanks as you would any acrylic blank. If an air bubble is exposed while sanding use a tiny drop of CA glue to fill it BEFORE you begin the polishing process. We recommend sanding up to 600 grit sandpaper. Then use Micro-Mesh (2400 through 12000). Fill any 'pin holes' that may appear in the acrylic with CA glue. Finally, buff using White Diamond buffing compound or with a liquid plastic polish.
5. Ensure that the inside of the tubes are free of any debris and chamfer all tubes prior to assembly to avoid cracking the blanks.

Sanded Edges



Pen Blank